



Cumberland County Cultural & Heritage Commission

Winter / Spring
2009

Chronicle

Enjoy The Winter Eagle Festival On February 7

Each winter, birding enthusiasts flock to Cumberland County to take part in one of our most popular events of the year, the annual Winter Eagle Festival. This year's event is scheduled for Saturday, February 7, from 7:00 AM to 5:00 PM at locations in Commercial Township and Downe Township.

"With wingspans of six to eight feet and weights of up to 16 pounds, the American Bald Eagle has made the open water, marshes, and woodlands of Cumberland County one of their winter homes,"



Bird enthusiasts will find plenty to see and do at the 2009 Winter Eagle Festival.

said Matthew Pisarski, Principal Planner. "The Winter Eagle Festival offers a great chance for visitors to see majestic birds such as hawks, owls, vultures, and eagles in their wild habitats."

In fact, Cumberland County features some of the most ecologically important landscapes in the Mid-Atlantic region. Our shoreline is globally significant because it is a critical feeding ground for migrating shorebirds.

Knowledgeable volunteers and staff members from the New Jersey Audubon Society and the Cape May Bird Observatory are located at various viewing sites to help participants spot and identify spe-

cific types of birds. "The day will include a sunrise walk at 7:00 AM, a 10:00 AM bald eagle trail walk, a 12:30 PM Maple Avenue trail walk, and a sunset owl watch at 5:00 PM," Pisarski continued. "In addition, there will also be informative exhibits, educational lectures, vendor displays, crafts, activities for children, and great food throughout the day at the Mauricetown Fire Hall."

Following a full day of birding, Citizens United to Protect the Maurice River will hold their annual Chili Bowl Dinner and Auction beginning at 6:30 PM at the Mauricetown Fire Hall. The

(Continued on page 2)

Inside This Issue

Message From The Coordinator	Page 2
Fun February Events Throughout Cumberland County.....	Page 3
VRDC Sponsors Two April Events.....	Page 3
Commission Completes Shared Services Study	Page 4
Bay-Atlantic Symphony Presents <i>Shadows And Light</i>	Page 5
Winter Weekends At WheatonArts	Page 5
April 26 Is Children's Farm Day	Page 6
Enjoy An Evening At The Theatre.....	Page 6
Millville Schools Present Multi-Cultural Week	Page 7
2009 Vineland Library Exhibits	Page 7
Free Lecture Series Sponsored By The Bay-Atlantic Symphony	Page 8

Cumberland County Board of Chosen Freeholders

Louis N. Magazzu
Director



Joseph Pepitone
Deputy Director

James A. Dunkins
Jane Jannarone
Dr. Joseph P. Riley
Nelson Thompson
William Whelan

Funding for this newsletter has been made possible in part by the New Jersey State Council on the Arts/Department of State, a Partner Agency of the National Endowment for the Arts and the Cumberland County Board of Chosen Freeholders.



Cumberland County Cultural & Heritage Commission Members

James A. Dunkins
Freeholder Liaison

Patricia Gale
Heislerville
Marianne Lods
Vineland

Roy Kaneshiki
Seabrook

Jean Jones
Millville

Suzanne Merighi
Vineland

Penny Watson
Bridgeton

Flavia Alaya
Bridgeton

John R. Garrison
Roadstown

Joseph Polhamus, Emeritus
Vineland

CCCHC
800 E. Commerce Street
Bridgeton, NJ 08302
856-453-2177
www.ccculturalheritage.org

Message From The Coordinator

Welcome and happy new year! First, on behalf of the members of the Cultural & Heritage Commission I would like to congratulate and welcome the new and returning members of the Cumberland County Board of Chosen Freeholders. As the Commission bids farewell to its previous liaison, Jane Yetman Christy, it is excited and honored to announce its new liaison, James A. Dunkins. The next newsletter will be dedicated to a more comprehensive introduction of Freeholder Dunkins, but suffice it to say that the Commission is truly thrilled and honored.

January is often a good time to review the previous year's activities and plan for the months ahead, and this is exactly what the Cultural & Heritage Commission is in the process of doing.

We find ourselves in these early months of 2009 in a fiscal downturn which is creating repercussions at all levels of government and society. In times such as these, it is more important than ever to make sure that every available dollar is spent in a wise and beneficial manner. To this end, over the next several months the

Commission will be carefully assessing every program and activity it produces to insure that every dollar is having the greatest impact possible to the cultural and heritage components of our community.

This analysis may result in the creation of new and innovative programming and the end of what are discovered to be inefficient and outdated policies. All of this work will be guided by the Commission's long-range plan, which presciently was completed just last year, to ensure that all activities by the Commission actively maintain its mission.

As the Commission continues its progress to provide efficient and effective service to the people of Cumberland County, it welcomes suggestions and interest in its activities. Take a few minutes to look through the many events and activities described in the following pages. With so much going on, Cumberland County really does have *More To Offer*.

Sincerely,
Matthew E. PisarSKI
MATTHEW E. PISARSKI
Coordinator



Enjoy The Winter Eagle Festival On February 7

(Continued from page 1)

event was a sellout in 2008, and featured 23 different types of chili and plenty of great auction items.

The fund-raiser helps Citizens United in their mission to protect the environmental, recreational, cultural, and scenic resources of the Maurice River watershed through increased education and awareness of the issues, informed decision making, research, and public advocacy efforts.

Admission to the Winter Eagle Festival is \$10.00 for adults and \$5.00 for children 12 and under. For more information about the Festival or for directions, please call 856-453-2177.

Tickets for the Chili Bowl Dinner are \$20.00. For more information or to obtain tickets, please call Citizens United to Protect the Maurice River and Its Tributaries, Inc., at 856-305-3238.

Fun February Events Throughout Cumberland County

Following are some "Fun February Events" happening throughout the county. Don't let the cold weather keep you at home! Get up, get out, and have a good time.

On Saturday, February 7, come and "Dance With The Warbirds" at a Valentine's Hangar Dance at the Millville Airport sponsored by the Millville Army Air Field Museum. There will be music provided by DJ Harry Snyder, great food catered by Verna's Flight Line Restaurant, and a multi-million dollar collection of original World War II planes on display owned by collector Thomas Duffy. Dancing begins at 6:00 PM and goes until 10:00 PM. Tickets are \$30.00 per person. For more infor-

mation, please call 856-327-2347.

If you want to dance but can't make it to the airport, the Boys & Girls Club of Vineland is presenting an "Oldies But Goodies" Dance on February 7 featuring music by Jerry Blavat. The event kicks off at 7:00 PM and goes until midnight at Merighi's Savoy Inn in Vineland. In addition to dancing, there will be a buffet dinner, Chinese Auction and 50/50 raffle. Tickets are \$40.00 per person. For more information, please call 856-696-4190.

Maurice River Music will sponsor a salon concert recital by Israeli-born pianist Itay Goren on Sunday, February 22, at 2:30 PM. Goren is a renowned performer, composer, and arranger who gave over 300 perfor-

mances as a member of the Israeli army band during his three years of military service. Seating is limited and reservations are required. For more information about this performance, please call 856-506-0580.

On Friday, February 27, Main Street Vineland presents "Chuckles and Cheese Steaks" at Hangar 84 on South 6th Street in Vineland. Enjoy an evening of top area comedians and delicious cheese steaks, wings, and other food specialties from Donkey's Place.

Doors open at 7:00 PM for dinner and the show begins at 8:00 PM. Tickets are \$20.00 per person which includes admission to the show and food. For more information, please call 856-794-8653.

VRDC Sponsors Two April Events

One of New Jersey's premier dance companies, the Vineland Regional Dance Company (VRDC), will hold two special events in April for the public to enjoy.

On Saturday, April 4, dance enthusiasts can experience outstanding talent at a Spring Dance Concert at the Cumberland County College Fine and Performing Arts Center. The event begins with a pre-performance cocktail party at 5:30 PM, with the performance starting at 7:00 PM. Tickets for the Cocktail Party are \$25.00. Performance tickets are \$25.00 and \$35.00. Senior citizens, students, and groups of 10 or more are \$20.00.

On Wednesday, April 22, come out and show your support for the VRDC at their annual Fashion Show fund-raiser at Merighi's Savoy Inn in Vineland. Tickets are \$40.00. More information on the Fashion Show will be available soon, so keep checking. Money raised at

the Fashion Show and other VRDC events helps to pay for choreographers, teachers, costumes, scenery, student scholarships, guest artists, production equipment rentals, advertising, and general operating support.

Founded in 1980, the VRDC offers the opportunity for talented young dancers to work with internationally recognized master teachers and choreographers. Many VRDC students have gone on to study with renowned groups including the Pennsylvania Ballet, the Houston Ballet, the San Francisco Ballet, the Boston Conservatory, the Boston Ballet, the Tisch School of the Arts at New York University, and the prestigious Julliard School.

Vineland Regional Dance Company students entertain guests at the 2008 Fashion Show.

To purchase tickets for either event or for more information about the VRDC, please call 856-691-6059 or visit their Web site at www.vrdc.org.



Commission Completes Shared Services Study

During 2008, the Cumberland County Cultural & Heritage Commission received a grant from the New Jersey Department of Community Affairs to study the benefits of sharing services with the Salem County Cultural & Heritage Commission. This was a significant accomplishment for Cumberland County as it marked the first time the state had awarded a shared services grant to study cultural and heritage commissions and the first time to study shared services between two county agencies. Typically, shared services' grants study consolidation of services between municipalities or between a municipality and a single county. Nancy Moses, who has worked with the Commission for several years on various planning projects, was again selected for this analysis, and met over the ensuing months with the Commissions, county administrative staff, freeholders, constituents, and

state funding agencies to determine the many issues involved.

The study identified many similarities between the two entities: the same number of Commissioners (9), the same staff size (1.5), freeholder liaisons, office support provided by their respective counties, nearly identical missions, and the same selection process for Commissioners. However, the study identified several key distinctions between the two as well. First, the two Commissions are administered through different county departments, with staff holding different titles and reporting differently up the chain of command. Second, the two Commissions differ in the size and expenditure patterns of their respective budgets. This is due in large part to a higher number of re-grant cultural organizations in Cumberland County, which results in higher annual re-grant awards. Nonetheless, this initial analysis identified that shared services were feasible.

Since feasibility was identified, Ms. Moses next studied the pros and cons of various forms of consolidation. Positive attributes of such an arrangement revolved mainly around cost savings, which could be achieved in such areas as communication materi-

als, Web site maintenance, training workshops, and management of the re-grant program. However, negative attributes were numerous and substantial. They included loss of identity, the need to resolve divergent administrative models between the two Commissions, complications regarding parity in funding between the two counties, the potential reduction of services to the constituent re-grant organizations within the two counties, and the impact of state funding calculations on a combined Commission.

Several models of potential consolidation were presented. The two Commissions met jointly in August to review the results of the analysis and came to a consensus. Given the extensive negative attributes associated with various forms of consolidation, the Commissioners agreed that these models would not be pursued. Rather, the Commissioners agreed that closer collaboration could result in both better outreach and improved efficiency. As a result, a plan of action was established which included two main initiatives:

1. Monthly meetings between the Cumberland and Salem Commission administrators to share ideas, explore cost-saving

initiatives, seek ways to strengthen the cultural sector, increase citizen services, and improve financial support. In addition, sharing some functions with other proximate counties such as Gloucester and Atlantic would also be possible.

2. The appointment of a Cumberland/Salem Cultural Coordinating Committee comprised of members of both Commissions which would meet twice annually to review progress.

Although the results of the grant-funded analysis did not take the form of formal shared services or consolidation, the analysis was still very successful in identifying ways in which the Cumberland and Salem Commissions can work more closely together to meet shared initiatives. In November of 2008, this new collaborative work began with a shared workshop between Cumberland, Gloucester, and Salem counties. The success of this workshop, with over 50 attendees, is a positive sign that the innovative efforts of the Cumberland County Cultural & Heritage Commission will result once again in better services and improved efficiency, something for which the Commission is always striving to achieve.

The Cumberland County Cultural & Heritage Commission will be meeting on the third Tuesday of each month unless otherwise noted. The meeting place is the Freeholder Meeting Room located at 790 East Commerce Street, Bridgeton, NJ 08302. The meeting time is 3:30 p.m. All meeting facilities are fully accessible.

Bay-Atlantic Symphony Presents

Shadows And Light

On March 28, The Bay-Atlantic Symphony explores two contrasting sides of one of the greatest composers of symphonic form, Johannes Brahms, at the Frank Guaracini, Jr. Fine and Performing Arts Center at Cumberland County College.

Conducted by Musical Director Jed Gaylin, Piano Brahms Concerto No. 1 in D minor opens with more bluster and anguish, perhaps than any other, while his Symphony No. 2 in D major is arguably his most contented and even ebullient work. As part of this exciting performance, we are delighted to welcome to the stage concert pianist Marian Hahn from the prestigious Peabody Conservatory. Concert goers can join Jed Gaylin at 7:00 PM for a "Pre-Concert Conversation with the Maestro," and then enjoy the performance beginning at 8:00 PM.



Marian Hahn

Gaylin, now in his 12th season as Musical Director of the Bay-Atlantic Symphony, is also the Principal Conductor of the Cape May Music Festival. A much sought-after guest conductor throughout Europe, he has appeared with such orchestras as the Accademia del Gran Teatre del Liceu of Barcelona, Spain, for repeat engagements, as well as the Bucharest Radio Orchestra, the Lodz Philharmonic, and the Moscow Chamber Symphony.

Marian Hahn holds the Singapore Conservatory of Music Chair in

Piano at the Peabody Conservatory in Baltimore, and has been a member of the piano faculty since 1987. As a liaison with the Young Siew Toh Conservatory of Music in Singapore, she has performed and given master classes in Singapore, Taiwan, Korea, and Thailand. Ms. Hahn was also in residence at Young Siew Toh during the fall semester of 2007. She has toured extensively as the pianist of The Amadeus Trio and was also a founding member of the Amabile Piano Quartet. Her recordings with both groups appear on the Summit and Kleos labels, respectively.

Tickets for the *Shadows and Light* performance are \$30 for adults, \$26 for adults age 55 and over, \$15 for students, and \$8 for children, and may be ordered by calling the box office at 856-692-8499.

For more information, please call the Bay-Atlantic Symphony at 856-451-1169 or visit the Symphony's Web site at www.bayatlanticsymphony.org.

This concert is made possible through funding from the New Jersey State Council on the Arts and the Geraldine R. Dodge Foundation.

Winter Weekends At WheatonArts

Experience and explore the arts this winter at a series of "free" family activity events in The Gallery of Fine Craft at WheatonArts. The Nature Crafts Series runs through March 21 from 11:00 AM to 1:00 PM, and will include the following "hands-on" topics:

- February 7** Create pine cone feeders for backyard birds
- February 14** Fruit and vegetable stamping
- February 21** Native American Dream Catchers
- February 28** Gourd creations using feathers and found objects
- March 7** Seed and bean mosaics
- March 14** Fruit and vegetable stamping
- March 21** Planting seeds in decorated pots

During the winter, the WheatonArts museum stores and the Museum of American Glass are open Friday, Saturday, and Sunday.

For more information, please call 856-825-6800.



April 26 Is Children's Farm Day

A Cumberland County tradition continues on the last Sunday in April as the Cumberland County Historical Society hosts its annual Children's Farm Day from Noon to 5:00 PM at the Gibbon House in Greenwich.

"We invite you to come and experience the farming and household chores of 18th and 19th century Cumberland County," said Executive Director Joan McAllister. "Costumed interpreters will be on hand to lead you through the day-to-day chores of Colonial and Victorian children in this realistic re-creation."

A visit to the village of Greenwich on this day will provide visitors with hands-on experiences about New Jersey and colonial history. Interpreters will practice writing with quill pens, spinning and weaving, dancing, and both farm and household activities that will help you understand the lives of so long ago. There will also be pony rides and a petting area with farm animals. Young adults

from Stow Creek School will be in authentic dress interpreting farm and family activities.

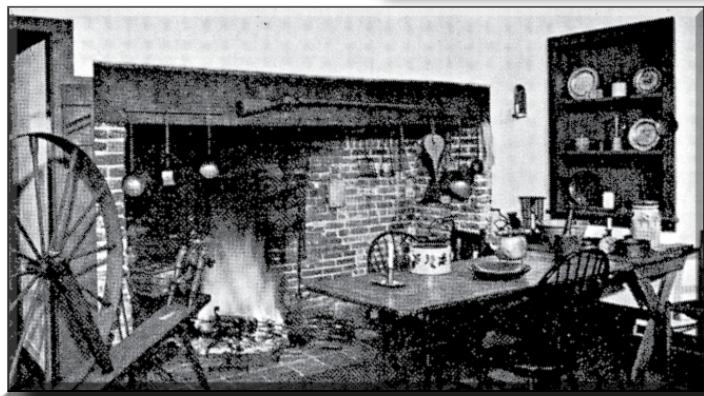
Interactive experiences will take place in the 1730 Gibbon House yard and kitchen, the Red Barn Museum and Learning Center, and the Prehistorical Museum. Farm Day is the perfect chance to enjoy the charm and tranquility of one of Cumberland County's hidden treasures.

As part of your day, we also recommend a self-guided walking tour along Ye Greate Street which will bring alive stories about the lives and times of colonials and give you an opportunity to observe the architecture and atmosphere of the times.

For more information, call the Cumberland County Historical Society at 856-455-4055 or visit www.cchistsoc.org.



1730 Nicholas Gibbon House, Greenwich.



Farm Day visitors can watch food being prepared in the traditional wood-burning fireplace of the Gibbon House.

Enjoy An Evening At The Theatre

Cumberland County's resident theatre companies will present two exciting performances during February and March. Bring the whole family and enjoy a true theatre experience.

The Off Broad Street Players will welcome February with their production of Joe DiPietro's *All Shook Up* at the Bridgeton High School Auditorium. Set in the rockin' 1950s, *All Shook Up* follows young Natalie and the other residents of a small Midwestern town when their world is changed forever by a rambunctious heartthrob named Chad. Put on your bobby socks and come out and enjoy this jukebox musical interpretation of Shakespeare's *Twelfth Night*, all set to the fabulous hits of Elvis Presley. Performances are scheduled for February 6, 7, 13, and 14 at 8:00 PM; February 8 and 15 at 3:00 PM; and February 12 at 7:30PM. Tickets are \$15.00 for adults, and \$13.00 for students and seniors. For more information, please call 856-451-5437.

The Cumberland Players will welcome spring with the hilarious comedy *Barefoot In The Park* by Neil Simon. The story revolves around newlyweds Paul and Corie Bratter as they adjust to married life in their tiny Greenwich Village apartment. Paul is a buttoned-down straight arrow lawyer who's wound a little too tight, and Corie is an effervescent free spirit who won't let anything disturb her romantic wedded bliss. Join the Bratters as they adjust to an odd collection of neighbors, mothers-in-law, and the inevitable challenges of newlyweds.

Performances are scheduled for March 20, 21, 26, 27, and 28, at 8:00 PM, and March 22 at 2:00 PM in The Little Theatre on Sherman Avenue in Vineland. Tickets are \$13.00, and may be purchased by calling 856-692-5626.

Millville Schools Present Multi-Cultural Week

The Millville School District will host its fifth annual Multi-Cultural Week, April 28 through May 1, in partnership with the Glasstown Arts District, the Riverfront Renaissance Center for the Arts, and the Cumberland County Improvement Authority. All fifth graders from Millville, Commercial Township, Lawrence Township, Maurice River Township, and Woodbine will attend the event between 10:00 AM and 2:00 PM. High school groups from Bridgeton, Millville, and Vineland are also invited.

The following activities are scheduled as part of this year's event:

- The Cumberland County Improvement Authority will host an exhibit from The African-American Heritage Museum of Southern New Jersey.
- Artwork with cultural themes created by Millville students will be on display at the Riverfront Renaissance Center.
- Presenters located at the Glasstown Plaza will include caricaturist George Fisher, the Woodbine Heritage Museum, the Bayshore Discovery Project, and the Millville Army Air Field Museum. Students will be making Italian lace under the direction of Cesarina DeCesero.
- Special performances will include the Jazz Band at Lakeside School and the Step Team from Millville High School.

The week concludes with a major evening event on Friday, May 1st from 6:00 PM to 9:00 PM in downtown Millville. The Festival will feature a variety of cultural performers

from the area including Jim Albertson, the Coyle School of Irish Dance, the John Wesley United Methodist Youth Group Gospel Singers, the Millville High School Step Team, Zumba Fitness and Dance, and the Aztec Dancers and Drummers.

In addition to the performances, student artwork will be displayed, and winners of the Millville School District Multi-Cultural Essay Contest will be announced. There will also be cultural tables containing information, art, and history from different community groups.



Cultural dancing will be a big part of the Multi-cultural Week events in Millville.

For more information about Multi-Cultural Week, please call the Glasstown Arts District at 800-887-4957 or visit www.GlasstownArtsDistrict.com.

2009 Vineland Library Exhibits

Following is the list of free rotating exhibits which will be on display throughout the year at the Vineland Public Library. Stop by and enjoy the work of some very talented artists and crafters from throughout the area.

- ◆ February – Emani Wilson
- ◆ March – South Jersey Quilters
- ◆ April – Doris Botts and Denise Gray
- ◆ May – Vineland High School Student Exhibit

- ◆ June 15 through July Picture America
- ◆ August – Myer Glick
- ◆ September – The Bay Gals
- ◆ October – Italian Heritage Student Art Exhibit – (Featuring high school students from throughout New Jersey)
- ◆ November and December Holidays in the Doll House

For more information, please call the Vineland Public Library at 856-794-4244.

Free Lecture Series Sponsored By The Bay-Atlantic Symphony

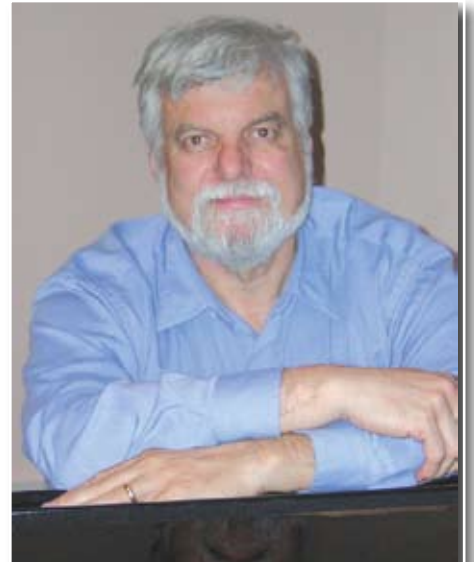
Jazz and classical music fans have the opportunity to learn more about jazz influences in classical music at the February installment of a free monthly music lecture series conducted by Paul M. Somers. The lecture series is sponsored by the Bay-Atlantic Symphony in association with the Millville Public Library.

The lecture series will take place on Tuesday nights from 7:00 PM to 8:30 PM at the Millville Public Library located at 210 Buck St. Topics will include “Dvorak’s Boogie-Woogie Bass” on February 17th, “Mills College’s French

Refugee” on March 17th, an “Open Session” to answer your musical questions on April 21st, and finally, “The Listener Owns It” on May 19th.

Paul Somers is a composer, performer, and founder of the Classical New Jersey Society and Maurice River Music. He also served as a music critic for the Newark Star-Ledger.

For more information, call the Bay-Atlantic Symphony at 856-451-1169, Paul M. Somers at 856-506-0580, or the Millville Public Library at 856-825-7087.



Paul M. Somers

*Cumberland County
Cultural & Heritage Commission*

**800 E. Commerce Street
Bridgeton, NJ 08302**
